

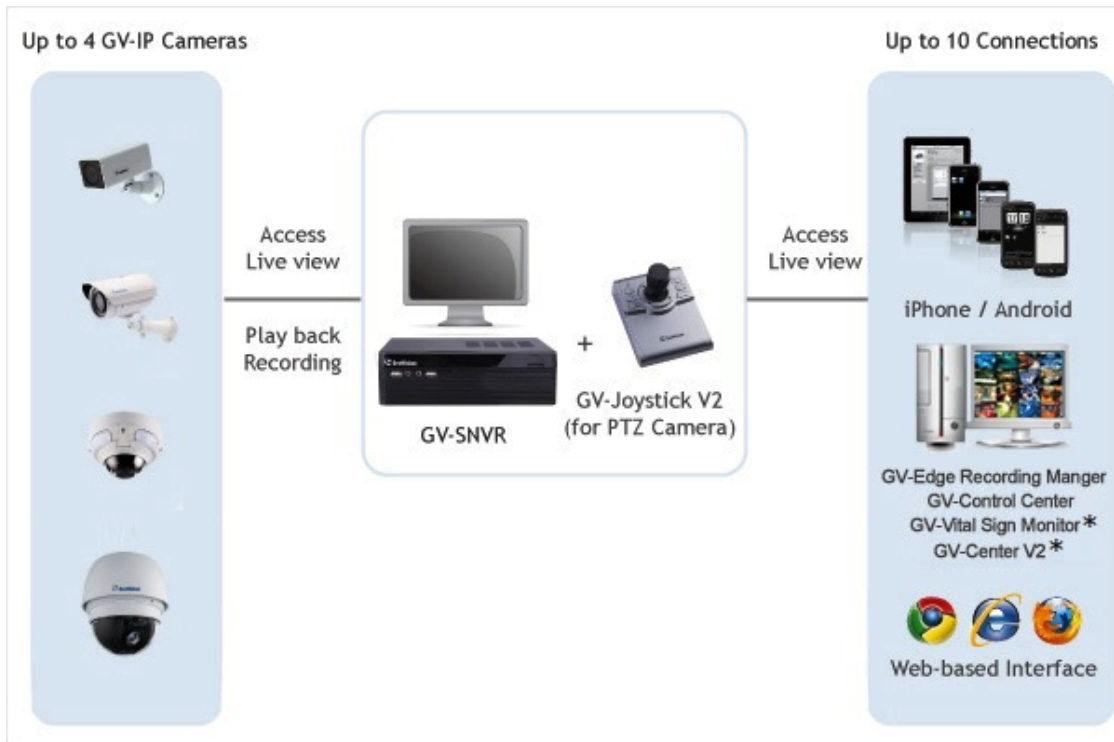
# GV-SNVR0400F



## Introduction

The GV-SNVR0400F is a Linux-embedded Standalone Network Video Recorder which records video files directly to the internal hard drive, supporting up to 4 channels of GV-IP Cameras for network surveillance. With the feature of a Full HD HDMI video output, the GV-SNVR eliminates the need for a separate PC to view and play back video from the unit. Its four USB ports allow you to connect a storage device to import or export system settings, update firmware, save snapshot files and back up video in AVI format.

Optionally, you can connect a GV-Joystick V2 to control PTZ cameras. Moreover, you can remotely access the live view through mobile devices or Web browsers with advanced video features.



**Note:**

The supported version of GV-Vital Sign Monitor and GV-Center V2 is coming soon.

## Available package

You can choose to purchase a GV-SNVR package or a bundled package which includes 4 GV-Target IP Camera of your choice and a GV-PoE switch. More details, please see " **Packing List** " tab.



GV-SNVR0400F Package



Bundled Package

## Features

- 4-Channel video recording
- Automatic search and set-up for IP cameras
- Up to 1920 x 1080 resolution for each channel
- Dual streams support
- Continuous, motion and scheduled recordings
- Timeline playback
- Multi-channel playback
- Display of HDD status and system temperature
- DST (Daylight Saving Time) support
- NTP (Network Time Protocol) support
- GeoVision DDNS server support
- E-mail notification for recording error and password retrieval
- Recording export
- Remote live view through Web browser
- PTZ control using GV-Joystick V2 or on-screen panel
- 1080p HDMI video output
- 1 SATA HDD drawer (3.5") for up to 4 TB storage
- Smart device access (iOS and Android)
- Support for 9 languages

## Specifications

### Hardware

System		
OS	Embedded Linux	
No. of Drive Bay	1 (3.5" HDD)	
Power Source	Input: AC 100 ~ 230V, 50 ~ 60 Hz Output: DC 19V, 3.42A, Max. 65 W	
Connectors	Gigabit Ethernet	1 port, RJ-45
	Video Output	HDMI
	Audio	N/A
	USB 2.0	Front: 2 ports, Rear: 2 ports
LED Indicator	2 LEDs: Power, HDD Error	
Operating Temperature	0°C ~ 40°C (32°F ~ 104°F)	
Humidity	0% ~ 90% RH (non-condensing)	
Dimensions (L x W x H)	206 x 220 x 65.5 mm (8.11 x 8.66 x 2.58")	
Net Weight	1.1 kg (2.43 lb)	
Regulatory	FCC , CE , RCM , RoHS compliant	

### Software

Video and Audio	
Video Compression	H.264
Video Stream	Dual streams from H.264
Video Resolution	Up to 1920 x 1080 each channel
Video Output	720p / 1080i / 1080p (HDMI)
Display Division	1 / 4
Audio Compression	N/A
Audio Support	N/A
Two-Way Audio	N/A

Operation	
Recording Bandwidth	Max. 50 Mbps for 4 channels
Recording Mode	Round the clock / Motion Detection / Schedule Recording
Pre Recording	1 ~ 10 sec.
Post Recording	30 sec.
Instant Playback	3 min.
Backup Type	USB storage device of FAT32 format

**Note:** For backup efficiency, it is suggested to use the external hard drive to back up recordings.

Management	
Language	English / Traditional Chinese / Spanish / Russian / Portuguese / French / German / Italian / Japanese
Firmware upgrade	Upgrade through OSD or GV-IP Device Utility

Network	
---------	--

Network Type	LAN, WAN, Internet
Protocol	DHCP, DynDNS, HTTP, NTP, TCP, UDP
<b>System Monitoring and Recovery</b>	
Power Restoration	Automatic restart after power outage
Monitoring	Software Watchdog
<b>Remote Viewing</b>	
Live View	Max. 10 channels connection
Monitoring Environment	IE, Chrome, Firefox and mobile devices
Smart Device Access	GV-Eye for iOS and Android
Access from Web Browser	Live View, Image Snapshot, Picture in Picture, Picture and Picture, Digital PTZ

**Note:** Product design and specifications are subject to change without notice.

## Accessories

GV-Joystick V2	The GV-Joystick V2 facilitates the PTZ camera control. It can be plugged into the GV-SNVR for independent use to empower the operation of PTZ cameras.
GV-POE Switch	The GV-POE Switch is designed to provide power along with network connection for IP devices. The GV-POE Switch is available in various models with different numbers and types of ports.

## Requirements

### Supported GV-IP Cameras

- GV-Target Series IP Camera (Firmware V1.0 or later)
- GV-SD220/220-S (Firmware V1.02 or later)
- All the other GV-IP Cameras (Firmware V2.11 or later) EXCEPT the models below:
  - GV-BX110
  - GV-BX12201
  - GV-BL110
  - GV-Fisheye IP Camera
  - GV-MFD110
  - GV-PT110
  - GV-PTZ010D
  - GV-SD010/200/200-S

Note:

1. The GV-SNVR supports the recording frame rate of up to 30 fps only.
2. The GV-SNVR0400F supports the recording bandwidth of up to 50 Mbps only.

### Supported GeoVision Application

- GV-Edge Recording Manager (Windows Version V1.1.0.0 or later)
- GV-Control Center (V3.3.0.0 or later)
- GV-Center V2 (V15.10 or later) – *upcoming*
- GV-Vital Sign Monitor (V15.10 or later) – *upcoming*
- GV-Eye (V2.0 or later)

### Recommended Hard Disks

GV-SNVR0400F supports 1 SATA HDD (3.5") with up to 4 TB capacities. For system efficiency, it is recommended to use the enterprise-level hard disk drives instead of desktop-level or green HDD. For tested hard disk drives, see Appendix in GV-SNVR User's Manual.

**Note:** The GV-SNVR does not support the 2.5" SATA HDD.

### Supported Web Browsers

- Internet Explorer 8 or later
- Google Chrome 33.0 or later
- Mozilla Firefox 28.0 or later

**Overview**

**Front Panel**



**Back Panel**



**Packing List**

You can choose to purchase a GV-SNVR package or a bundled package which includes 4 GV-Target IP Camera of your choice and a GV-PoE switch.

**GV-SNVR0400F Package**

1. GV-SNVR0400F
2. AC power cord
3. AC/DC adapter (DC 19V, 3.42 A, 65 W)
4. Screw x 6 (for HDD)
5. SATA cable



**Bundled Package for GV-SNVR**

1. GV-SNVR Package x 1
2. Target IP Camera x 4
3. GV-POE0400 x 1



**Note:** For the Target IP Camera, select any 4 models from [GV-EBL1100 / 2100](#), [GV-EBX1100](#), [GV-EDR1100 / 2100](#), [GV-EFD1100 / 2100](#). For more information, contact our sales representatives.